



2  3  2 

16 Lawrence Crt, winchelsea

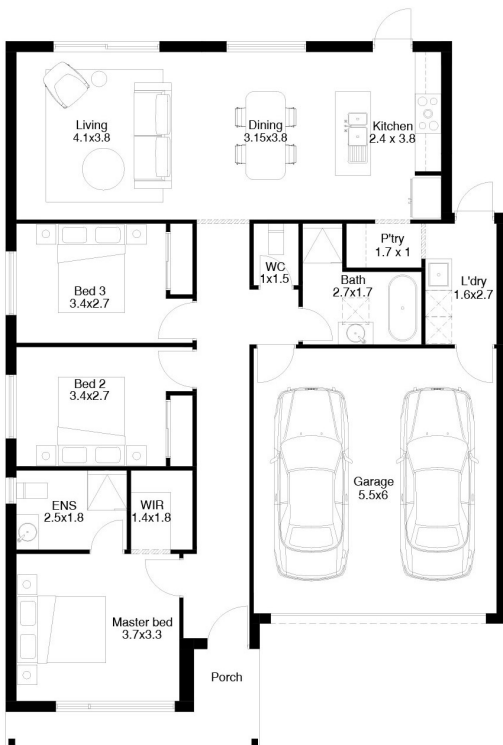
House and Land Package Price: \$645,000.00

Size

17.3sq

Inclusions

- 2590mm Ceiling Height.
- 900mm appliances.
- Dishwasher
- Stone tops to Kitchen and Bathrooms.
- LED lighting throughout.
- Split system cooling and Central heating throughout
- Colorbond Roof
- Exposed Agg Driveway
- Aluminium framed windows and sliding doors.
- Nylon mesh flyscreens to all windows.
- Brick infills over all windows and doors.
- Floor coverings throughout
- Sectional garage door including remotes.
- Recessed tiled shower bases.
- Roller blinds throughout.
- Fixed site costs up to class P soil.
- Developer & council requirements.
- 6 Month Maintenance Period.
- One on one colour appointment.



Keegan Ramsey
keegan@levonixhomes.com.au
0499 199 542
www.levonixhomes.com.au



DISCLAIMER: Façade shown is included in the advertised price, but may need to be altered to achieve developer approval and available lots. Inclusions/items listed are part of the Levonix Homes standard inclusions list. Landscaping, fencing and external images are for illustration purposes only. Prices are correct at the time of publishing but may change without notice. Prices do not include stamp duty, legal fees or any other cost incurred in connection with the purchase of the land. Unless specified as a fixed price, additional cost may be incurred due to undetermined site conditions based on the results of a site survey and soil test. House and land packages are subject to land availability which may change at any time without notice. For specific details in relation to this advertised house and land package, please refer to a Levonix Homes Sales Consultant on 1300804410. Levonix Homes (ABN 5616877384). Valid until 18/11/2022 12:00:00 AM